



BEYOND THE NUMBERS: A BRIDGE TO SOMETHING BETTER

MY EXPERIENCE APPLYING:

- **REJECTED BY SOME, ACCEPTED BY OTHERS**
- **HARVARD UNIVERSITY - SCHOLARSHIP**

MY WORK:

- **FOUNDER – A-LIST EDUCATION**
 - **HELPED THOUSANDS OF SCHOOLS/STUDENTS
WITH COLLEGE READINESS SAT/ACT, ESSAYS AND
APPLICATIONS**
-

30,000+ HIGH SCHOOLS

30,000+ VALEDICTORIANS

30,000+ PRESIDENTS OF STUDENT GOVERNMENT

30,000+ EDITORS IN CHIEF OF SCHOOL NEWSPAPERS

300,000+ CAPTAINS OF VARSITY SPORTS TEAMS

3.5+ AVERAGE GPA OF APPLICANTS TO TOP UNIVERSITIES

**3,000,000+ STUDENTS ENROLL IN
US UNIVERSITIES EACH YEAR**

WHAT MAKES YOU SPECIAL?

GETTING FROM WHERE WE ARE TO WHERE WE WANT TO GO



COLLEGE READINESS IS ABOUT MORE THAN “STANDARDS”

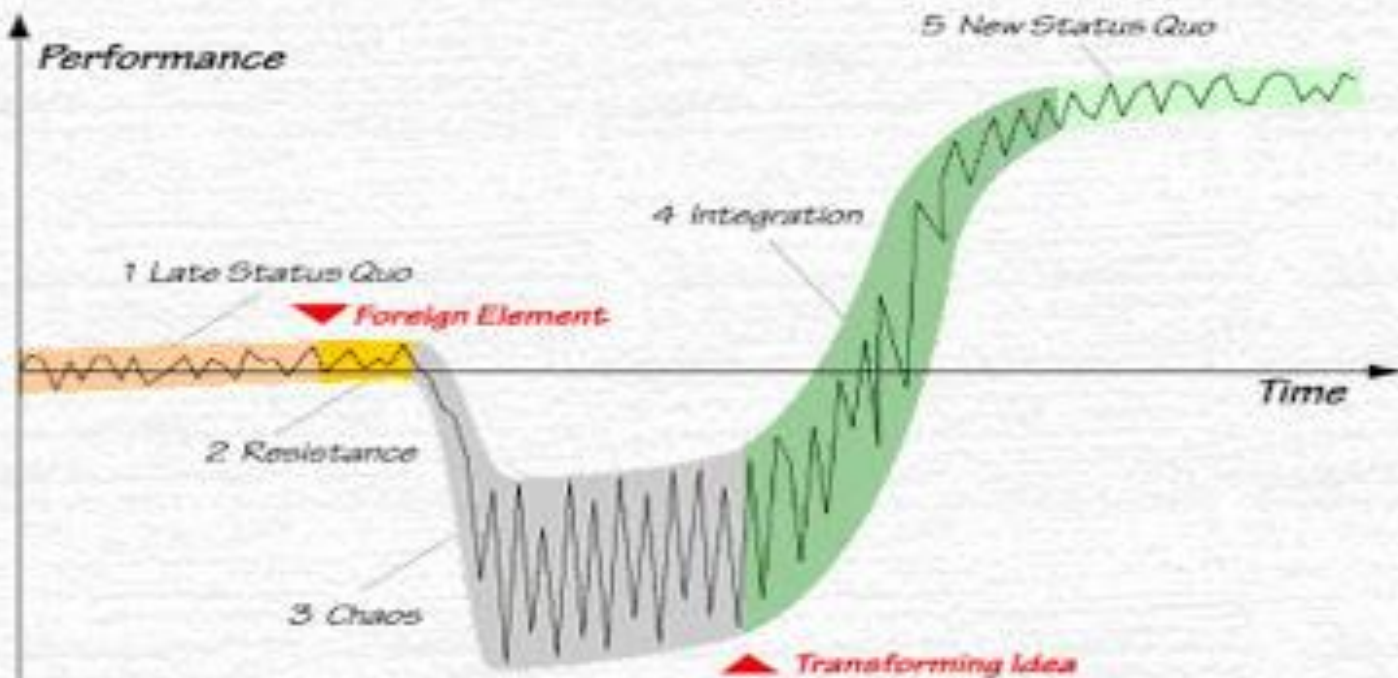
AMBITION

BUT KANTER'S LAW TELLS US...



**EVERYTHING LOOKS LIKE A FAILURE IN
THE MIDDLE.**

Satir Change Model



©Steve Smith 2000
Used by permission

GETTING FROM WHERE WE ARE TO WHERE WE WANT TO GO

1. **Ambition**
2. **Failure**
3. **Commitment**

DARE TO BE DIFFERENT.

TABLE 7. PERCENTAGE OF COLLEGES ATTRIBUTING DIFFERENT LEVELS OF IMPORTANCE TO FACTORS IN ADMISSION DECISIONS: FIRST-TIME FRESHMEN, FALL 2016

Factor	N	Considerable Importance	Moderate Importance	Limited Importance	No Importance
Grades in College Prep Courses	216	76.9%	12.5%	9.3%	1.4%
Grades in All Courses	218	77.1	13.8	6.4	2.8
Strength of Curriculum	218	51.8	35.3	7.3	5.5
Admission Test Scores (SAT, ACT)	219	54.3	27.9	13.7	4.1
Essay or Writing Sample	217	18.9	35.9	22.1	23.0
Counselor Recommendation	213	14.6	46.0	25.8	13.6
Student's Demonstrated Interest	212	13.7	25.5	32.1	28.8
Teacher Recommendation	211	10.9	46.4	28.0	14.7
Class Rank	217	9.2	24.0	34.6	32.3
Subject Test Scores (AP, IB)	216	6.9	30.6	30.6	31.9
Portfolio	210	6.2	5.7	27.6	60.5
Extracurricular Activities	214	7.9	36.0	36.9	19.2
SAT II Scores	212	2.4	6.1	21.2	70.3
Interview	213	4.7	17.4	31.9	46.0
State Graduation Exam Scores	210	1.9	7.6	21.9	68.6
Work	211	2.8	15.6	47.4	34.1

SOURCE: NACAC Admission Trends Survey, 2016

TABLE 7. PERCENTAGE OF COLLEGES ATTRIBUTING DIFFERENT LEVELS OF IMPORTANCE TO FACTORS IN ADMISSION DECISIONS: FIRST-TIME FRESHMEN, FALL 2016

Factor	N	Considerable Importance	Moderate Importance	Limited Importance	No Importance
Grades in College Prep Courses	216	76.9%	12.5%	9.3%	1.4%
Grades in All Courses	218	77.1	13.8	6.4	2.8
Strength of Curriculum	218	51.8	35.3	7.3	5.5
Admission Test Scores (SAT, ACT)	219	54.3	27.9	13.7	4.1
Essay or Writing Sample	217	18.9	35.9	22.1	23.0
Counselor Recommendation	213	14.6	46.0	25.8	13.6
Student's Demonstrated Interest	212	13.7	25.5	32.1	28.8
Teacher Recommendation	211	10.9	46.4	28.0	14.7
Class Rank	217	9.2	24.0	34.6	32.3
Subject Test Scores (AP, IB)	216	6.9	30.6	30.6	31.9
Portfolio	210	6.2	5.7	27.6	60.5
Extracurricular Activities	214	7.9	36.0	36.9	19.2
SAT II Scores	212	2.4	6.1	21.2	70.3
Interview	213	4.7	17.4	31.9	46.0
State Graduation Exam Scores	210	1.9	7.6	21.9	68.6
Work	211	2.8	15.6	47.4	34.1

SOURCE: NACAC Admission Trends Survey, 2016

TABLE 7. PERCENTAGE OF COLLEGES ATTRIBUTING DIFFERENT LEVELS OF IMPORTANCE TO FACTORS IN ADMISSION DECISIONS: FIRST-TIME FRESHMEN, FALL 2016

Factor	N	Considerable Importance	Moderate Importance	Limited Importance	No Importance
Grades in College Prep Courses	216	76.9%	12.5%	9.3%	1.4%
Grades in All Courses	218	77.1	13.8	6.4	2.8
Strength of Curriculum	218	51.8	35.3	7.3	5.5
Admission Test Scores (SAT, ACT)	219	54.3	27.9	13.7	4.1
Essay or Writing Sample	217	18.9	35.9	22.1	23.0
Counselor Recommendation	213	14.6	46.0	25.8	13.6
Student's Demonstrated Interest	212	13.7	25.5	32.1	28.8
Teacher Recommendation	211	10.9	46.4	28.0	14.7
Class Rank	217	9.2	24.0	34.6	32.3
Subject Test Scores (AP, IB)	216	6.9	30.6	30.6	31.9
Portfolio	210	6.2	5.7	27.6	60.5
Extracurricular Activities	214	7.9	36.0	36.9	19.2
SAT II Scores	212	2.4	6.1	21.2	70.3
Interview	213	4.7	17.4	31.9	46.0
State Graduation Exam Scores	210	1.9	7.6	21.9	68.6
Work	211	2.8	15.6	47.4	34.1

SOURCE: NACAC Admission Trends Survey, 2016

TABLE 7. PERCENTAGE OF COLLEGES ATTRIBUTING DIFFERENT LEVELS OF IMPORTANCE TO FACTORS IN ADMISSION DECISIONS: FIRST-TIME FRESHMEN, FALL 2016

Factor	N	Considerable Importance	Moderate Importance	Limited Importance	No Importance
Grades in College Prep Courses	216	76.9%	12.5%	9.3%	1.4%
Grades in All Courses	218	77.1	13.8	6.4	2.8
Strength of Curriculum	218	51.8	35.3	7.3	5.5
Admission Test Scores (SAT, ACT)	219	54.3	27.9	13.7	4.1
Essay or Writing Sample	217	18.9	35.9	22.1	23.0
Counselor Recommendation	213	14.6	46.0	25.8	13.6
Student's Demonstrated Interest	212	13.7	25.5	32.1	28.8
Teacher Recommendation	211	10.9	46.4	28.0	14.7
Class Rank	217	9.2	24.0	34.6	32.3
Subject Test Scores (AP, IB)	216	6.9	30.6	30.6	31.9
Portfolio	210	6.2	5.7	27.6	60.5
Extracurricular Activities	214	7.9	36.0	36.9	19.2
SAT II Scores	212	2.4	6.1	21.2	70.3
Interview	213	4.7	17.4	31.9	46.0
State Graduation Exam Scores	210	1.9	7.6	21.9	68.6
Work	211	2.8	15.6	47.4	34.1

SOURCE: NACAC Admission Trends Survey, 2016

TABLE 7. PERCENTAGE OF COLLEGES ATTRIBUTING DIFFERENT LEVELS OF IMPORTANCE TO FACTORS IN ADMISSION DECISIONS: FIRST-TIME FRESHMEN, FALL 2016

Factor	N	Considerable Importance	Moderate Importance	Limited Importance	No Importance
Grades in College Prep Courses	216	76.9%	12.5%	9.3%	1.4%
Grades in All Courses	218	77.1	13.8	6.4	2.8
Strength of Curriculum	218	51.8	35.3	7.3	5.5
Admission Test Scores (SAT, ACT)	219	54.3	27.9	13.7	4.1
Essay or Writing Sample	217	18.9	35.9	22.1	23.0
Counselor Recommendation	213	14.6	46.0	25.8	13.6
Student's Demonstrated Interest	212	13.7	25.5	32.1	28.8
Teacher Recommendation	211	10.9	46.4	28.0	14.7
Class Rank	217	9.2	24.0	34.6	32.3
Subject Test Scores (AP, IB)	216	6.9	30.6	30.6	31.9
Portfolio	210	6.2	5.7	27.6	60.5
Extracurricular Activities	214	7.9	36.0	36.9	19.2
SAT II Scores	212	2.4	6.1	21.2	70.3
Interview	213	4.7	17.4	31.9	46.0
State Graduation Exam Scores	210	1.9	7.6	21.9	68.6
Work	211	2.8	15.6	47.4	34.1

SOURCE: NACAC Admission Trends Survey, 2016

BEYOND THE NUMBERS AND RESUME



Self Control

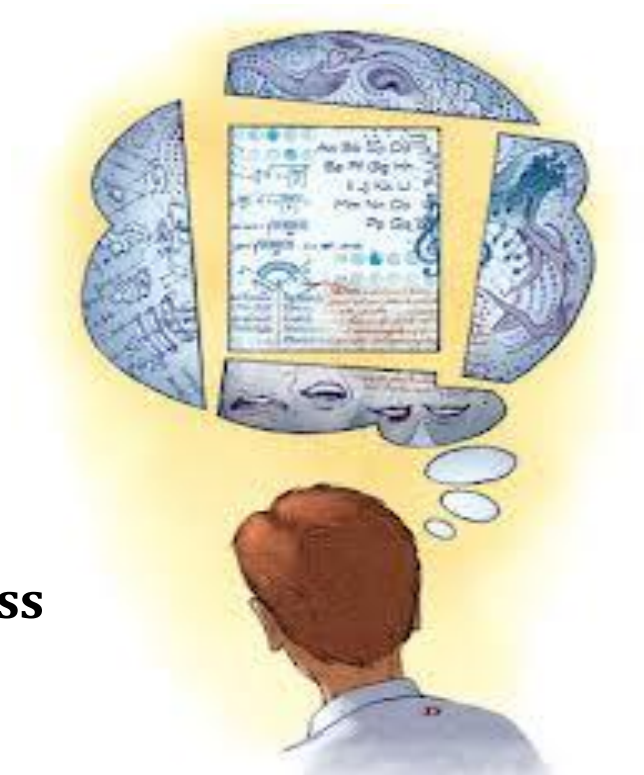
Persistence

Curiosity

Grit

Conscientiousness

Self Confidence



Tell me and I will forget.
Show me and I will remember.
Involve me and I will understand.

Chinese Proverb
(and some pretty great advice)
